



6.2 mm enclosure  
**KS 4460**

Best  
performance  
... smallest space.

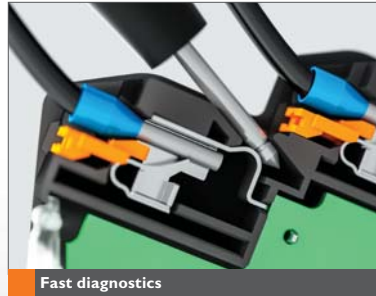
**DOLD**   
Our experience. Your safety.

# Super compact – variable connection technology!

## KS 4460: Modern electronics require innovative enclosure solutions. We have them:

Our KS 4460 not only allows for a variety of applications – it is also very impressive: from the functional design to the manufacturing quality all the way to the application. The consistent modular 6.2 mm enclosure system makes it possible for the developer to arrange modules at his own discretion in connection with the mounting rail bus. With this enclosure, we offer you an individually customised solution – for more possibilities.

Ask us, challenge us!



**Fast diagnostics**

The integrated test point allows for fast, simple diagnostics directly on site



**Improved user ergonomics**

The test probe (Ø 2 mm) clicks into place, providing the inspector with additional space to work



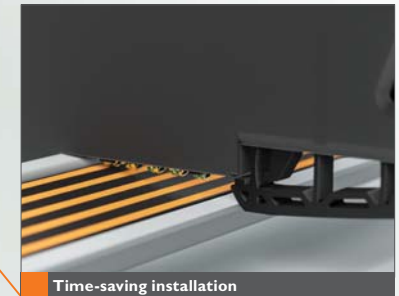
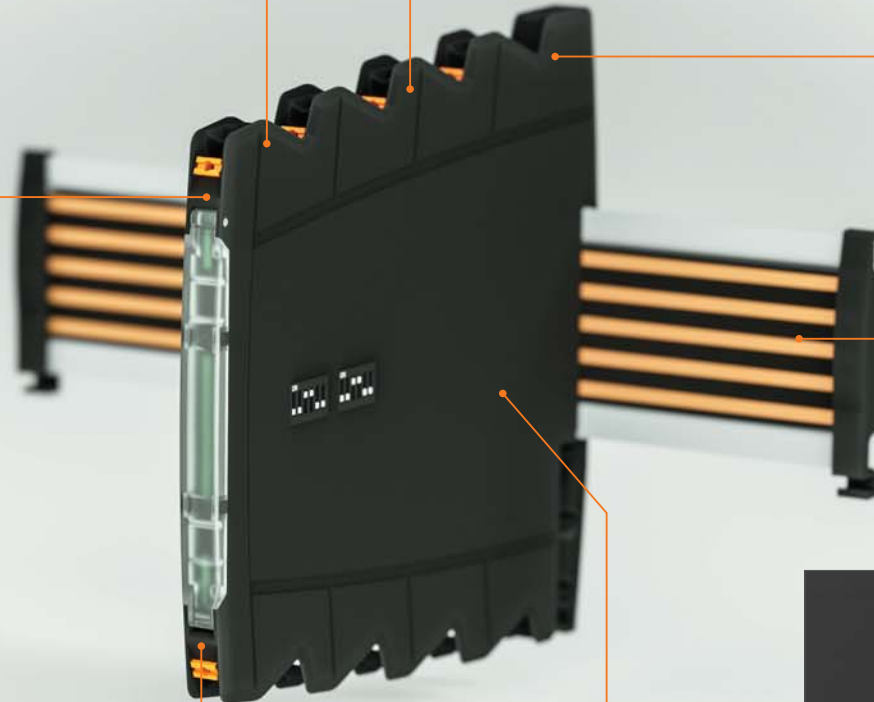
**Custom label areas**

The housing offers a large number of printing options



**Convenient direct connection**

Quickly detach the cable with a simple tool using a high visibility release button



**Time-saving installation**

The optional mounting rail bus facilitates installation without wiring work and without interruptions



**Wiring completed without any tools**

Wiring is simple and requires no tools, using push-in connection technology (spring force) to minimize installation work



**Plug-in contact spring block**

Simple and secure installation with plug-in technology also allows for subsequent or alternative in-rail-bus connections

# 6.2 mm width – highest functionality!



**Various marking possibilities**

The enclosure offers plenty of space for individual and abrasion-resistant laser markings of your choice



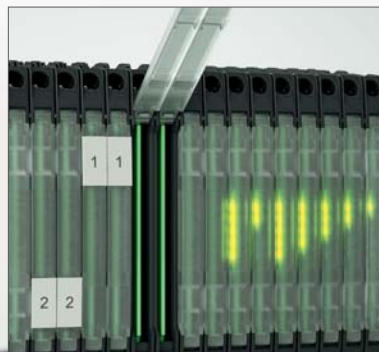
**Easier access – easier measurement**

All connections can be accessed directly. That makes it possible to measure current during running operation. In this way, access for testing is possible at any time



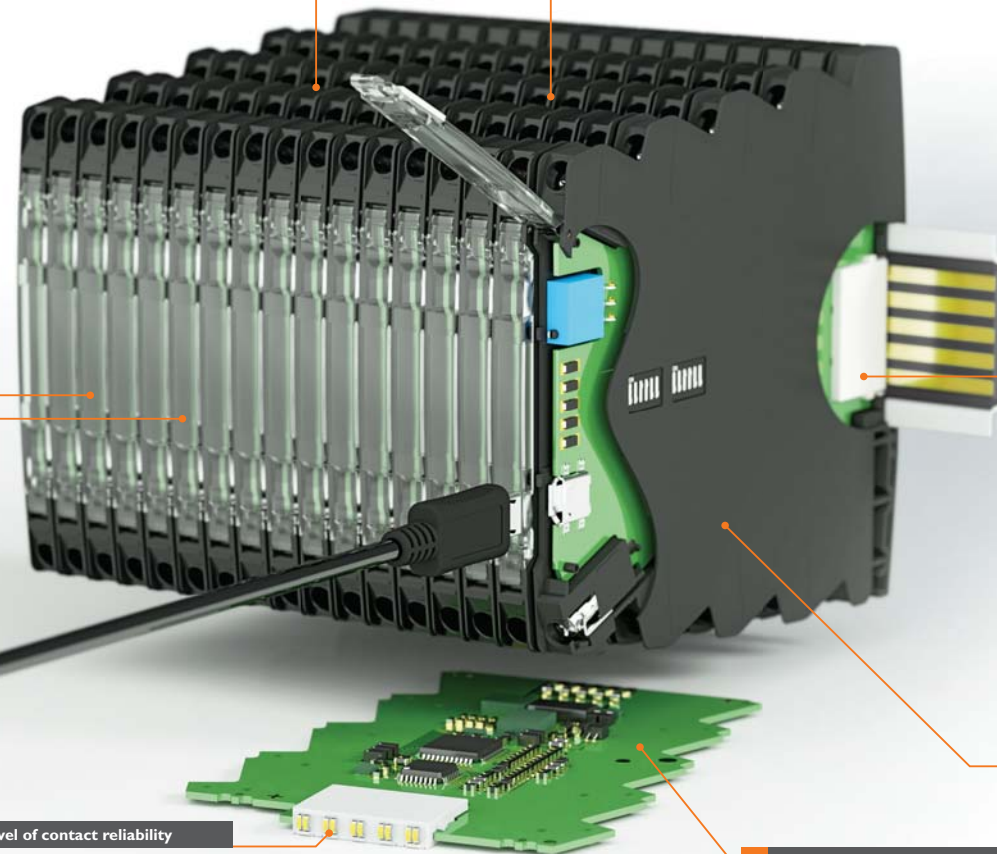
**Connection according to requirement**

Standardly equipped with screw terminals, optionally with spring terminals



**All functions at a glance**

Immediate diagnosis for each individual unit – simply by means of the status LEDs on the front side



**High level of contact reliability**

The machine-solderable contact spring block with gold-plated double spring contacts offers the highest level of contact reliability for the mounting bus system

**Material saved – costs reduced**

PCB contour makes it possible to design in a cost-efficient manner

## Customer benefits:

- ▶ Various installation positions of the PCBs are possible
- ▶ Components up to 5.1 mm in height can be used
- ▶ Quick assembly of the enclosure parts which can be locked in place
- ▶ Space savings using an installation width of 6.2 mm
- ▶ More room for play with regard to design, 4850 mm<sup>2</sup> circuit board surface area

## Highlights:

- ▶ Cutouts for components, display or control elements are possible on the side or the front
- ▶ Hinged front plate also available with snap in marking plate
- ▶ 8 screw connections, optionally with spring connections
- ▶ With mounting rail bus (In-Rail-Bus) – optional
- ▶ Various enclosure colours
- ▶ UL approval



**Quick installation**

The mounting bus system simply locks in place – and device communication takes place immediately (performance / data / signals)



**More room for components**

By means of special notches, we have maximised the installation height for components to 5.1 mm

# KS 4460 – Highlights at a glance!



## Less installation work

Housing elements click into place on the finished assembly without tools



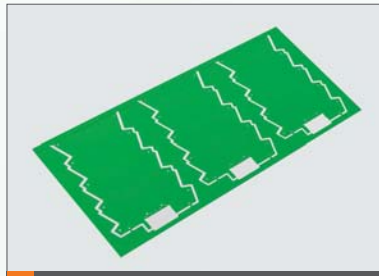
## Optimal design freedom

Any desired openings (DIP switch, etc.) according to customer requests



## Variable front surface

Custom printing on front surface possible, with either label plate or fiber optics. Front plate with swiveling cover, also available in different colors



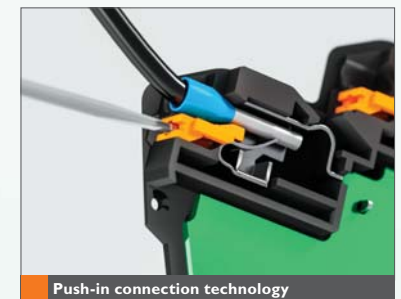
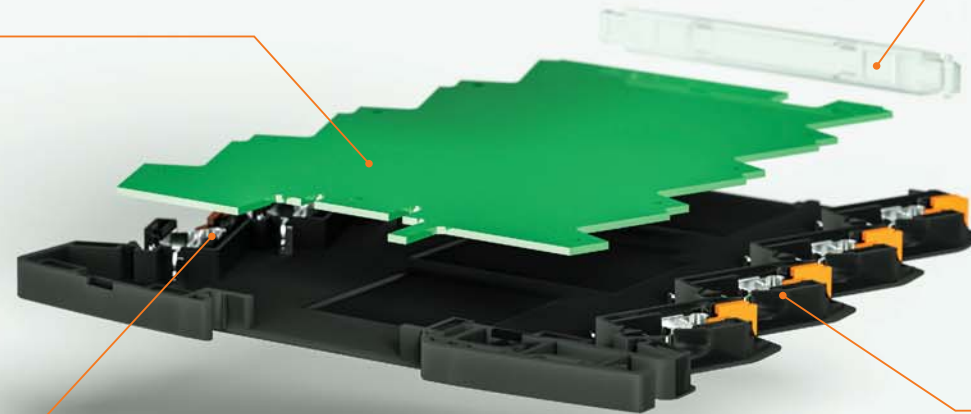
## Maximum economic efficiency

The circuit board is customized for current applications, and offers 4850 mm<sup>2</sup> of usable circuit board space for design in processes



## Integrated screw terminals

Screw connection technology for cables up to 2.5 mm<sup>2</sup>



## Push-in connection technology

Spring-loaded terminal with push-in connection technology for cables up to 2.5 mm<sup>2</sup> and integrated test point

# DOLD – Solutions for your electronics. Just as individual as your application.

## Enclosures are what counts!

Enclosures do not only serve as pure enclosures for electronics. Today they are much more than is disclosed at first glance. By means of modern tooling concepts, off-the-shelf solutions are a thing of the past. Flexible enclosure systems are in demand that can simply adapt to their application.

We see ourselves as project partners and support you with the design-in process. You can fully concentrate on electronic development. You can rely on our competence which is based on decades of experience.

We would be happy to provide you information on other product solutions brought to you by our company.



## Switch cabinet enclosure

DOLD currently offers 7 different enclosure series in common construction widths for installation into switch cabinets. Therefore, the right enclosure solution is always available for the various demands of diverse applications.



## Safety relay

As a pioneer and technology leader for safety relays with forcibly guided contacts, PCB relays and miniature relays, we offer our customers technically advanced solutions for the secure switching of electrical power with minimal dimensions.



# DOLD



**E. DOLD & SÖHNE KG**

P.O. Box 1251 • 78114 Furtwangen • Germany  
Phone +49 7723 6540 • Fax +49 7723 654356  
gv-vertrieb@dold.com • www.dold.com