



SAFEMASTER PRO

DOLD

Configurable safety system - Modular and multifunctional

With the size of the plants and complexity of the safety requirements the number of safety devices increases in many applications. In addition logical functions need to be implemented when e.g. only parts of the whole system needed to be disconnected. The modular and **configurable safety system SAFEMASTER PRO** of DOLD monitors the safety circuits of your machines and plants simple, flexible and safe. The number of inputs and outputs of the central control unit can be amended by extension modules. In this way SAFEMASTER PRO can be configured very flexible to the actual application.

The configuration of the TUEV approved system is done very simple on a PC with the free configuration software **SAFEMASTER PRO Designer**: Select safety functions, assign in and outputs and connect them comfortably by PC. Finally transfer the tested logic via USB cable to the safety controller. Ready!

Your advantages

- ▶ For safety applications up to Cat 4 / PL e and SIL 3
- ▶ TUEV certified hardware and software
- ▶ Configuration instead of wiring with SAFEMASTER PRO Designer
- ▶ Simple handling by Drag & Drop in the graphic programming tool
- ▶ Time and cost saving set-up
- ▶ Reduces wiring and saves space in the cabinet
- ▶ Flexible extension with safe I/O modules
- ▶ Safe remote I/Os with bus extender modules for longer distances
- ▶ Extensive failure localisation and diagnostics
- ▶ Memory card as option for simple maintenance

Our experience. Your safety.

Configurable safety system

Technical features

- ▶ Compact design: Control Unit and Extension modules only 22.5 mm width
- ▶ Max. 128 safe inputs and 16 safety related outputs
- ▶ In addition to the Controller unit max. 14 extension modules can be connected
- ▶ Flexible safety logic to create and amend the safety functions
- ▶ Safe integrated logic testing
- ▶ Monitoring outputs, status LEDs and field bus connection to provide best diagnostic functions
- ▶ TÜV and UL approval



Now also with safe speed monitoring!

System components



Control unit

8 safety inputs, 2 dual channel safety outputs (OSSD). Individual programmable restart condition of the feedback circuit for each output. Configuration via PC by Mini USB port
UG 6911.10 Article-No. 0063818



Input/Output module

8 safety inputs, 2 dual channel safety outputs (OSSD). Individual programmable restart condition of the feedback circuit for each output.
UG 6916.10 Article-No. 0063819



Input modules

8, 12 or 16 safety inputs
UG 6913.08 Article-No. 0063820
UG 6913.12 Article-No. 0064865
UG 6913.16 Article-No. 0063821



Output modules OSSD

2 or 4 dual channel safety outputs (OSSD). Individual programmable restart condition of the feedback circuit for each output.
UG 6912.02 Article-No. 0063822
UG 6912.04 Article-No. 0063823



Output modules relay

1 or 2 dual channel safety relay outputs for relay contact extension of the OSSDs
UG 6912.14 Article-No. 0063824
UG 6912.28 Article-No. 0063825



Bus Extender

Decentralization of safe inputs/outputs up to 50 m with up to 6 decentralized module groups
UG 6918 Article-No. 0064866



Fieldbus modules

Fieldbus modules (Gateways) to provide overall diagnostics and data communication:
UG 6951 (CANopen) Article-No. 0063828
UG 6952 (PROFIBUS DP) Article-No. 0063826
UG 6954 (PROFINET) Article-No. 0064861
UG 6955 (Ethernet/IP) Article-No. 0064862
UG 6956 (EtherCAT) Article-No. 0064863
UG 6957 (USB) Article-No. 0064864

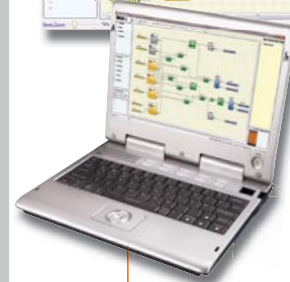
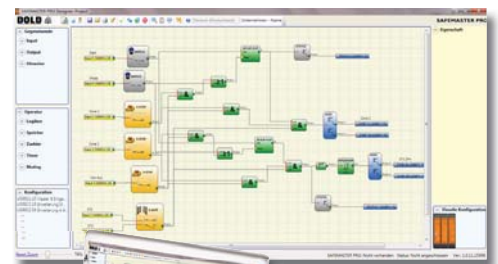
Further information

SAFEMASTER PRO

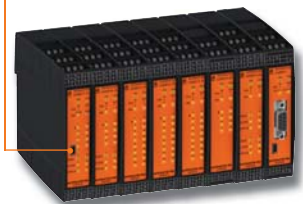
Start

www.dold.com

Configuration instead of wiring with SAFEMASTER PRO Designer



Mini USB-Port



Simple configuration in only 3 steps:

- 1 Select and configure safety functions
- 2 Assign in- and outputs and connect them comfortably on the PC
- 3 Test safety logic and transfer it via USB cable to the safety module - ready!

DOLD

E. DOLD & SÖHNE KG
P.O. Box 1251 • 78114 Furtwangen • Germany
Tel. +49 7723 6540 • Fax +49 7723 654356
dold-relays@dold.com • www.dold.com