



## SAFEMASTER W

**DOLD** 

### Wireless emergency stop system - Work wirelessly

In automated manufacturing systems, safety devices ensure that the operator does not come too close to the hazardous area during automatic operation. Frequently, however, operators must work in hazardous areas in special machine operating modes during reviews, programming, or maintenance. In such situations, the **wireless emergency stop system** from the **SAFEMASTER W** family by DOLD offers the safety you need. It is the wireless solution for mobile applications in extended or complex facilities with hazardous zones.

With the wireless emergency stop system, you can safely be closer to what's happening. Besides the safety function, the handheld transmitter has a button and switch which can be freely configured for user-specific control tasks for convenient operation. Independent of the user's location, it facilitates secure operation and makes it possible to switch off facilities in dangerous situations. It can be used universally, providing maximum mobility and safety.

An electronic key allows rights to be allocated to individuals. The optional design of the system with infrared transmitter and infrared receiver serves to securely (re)start machines from pre-defined start zones in the field of view.

#### Advantages and customer benefit

- ▶ Maximum mobility and flexibility with the highest level of security
- ▶ For security applications up to cat. 4 / PL e or SIL CL 3, TÜV certified
- ▶ Ergonomic handheld transmitter for fatigue-free work
- ▶ Comfortable one-handed operation
- ▶ Maximum freedom of movement due to the cordless design
- ▶ 2-stage push button with tactile switching points
- ▶ Clearly arranged control panel, can be configured individually
- ▶ Protection from accidentally pressing the button
- ▶ Quick charging and high capacity transmitter battery

**Our experience. Your safety.**

# Wireless emergency stop system

## Technical features

- ▶ Safe transmission path
- ▶ User-friendly, compact handheld transmitter
  - For wireless safety module BI 5910
- ▶ Comfortable, one-handed operation
- ▶ Available if desired with 4 freely configurable buttons or knobs for control functions
- ▶ With tactile switching points for the 2-stage button
- ▶ With label fields beside the buttons
- ▶ Protection from accidentally operating the buttons
- ▶ Quick charging and high capacity transmitter battery
- ▶ Possible to quickly adjust frequency
- ▶ Optional belt or chest bag for the handheld transmitter

### Safety technology characteristics

Performance Level (PL) e and category 4 in accordance with EN ISO 13849-1: 2008

Safety Integrity Level (SIL 3) in accordance with IEC/EN 61508



Wireless safety module  
BI 5910



Handheld transmitter  
RE 5910



Infrared receiver  
(as option)

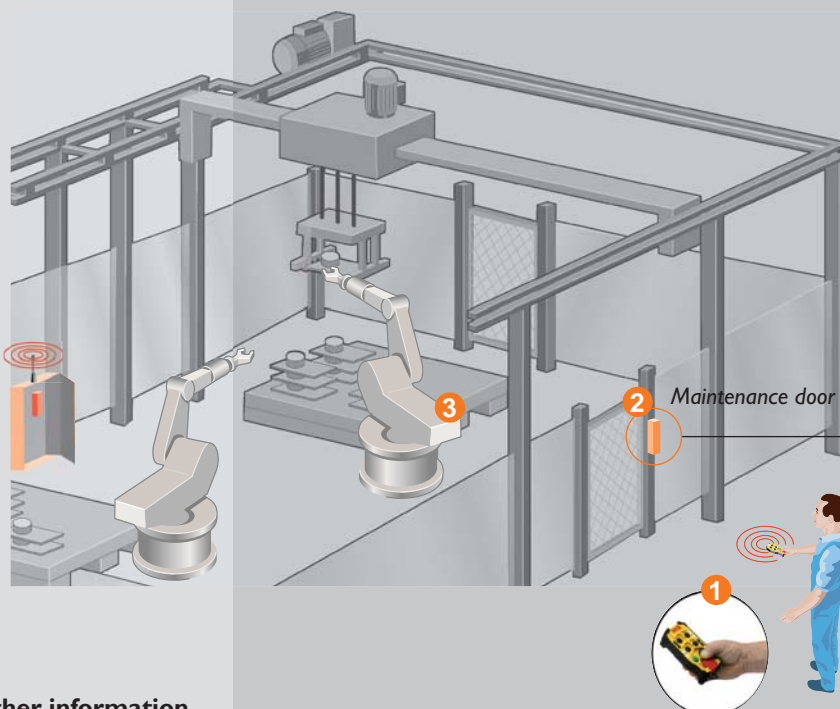
## Order information

Standard type: BI 5910.22/00MF9 DC 24V  
Item number: 0059002

Standard type: RE 5910/001  
Item number: 0060610

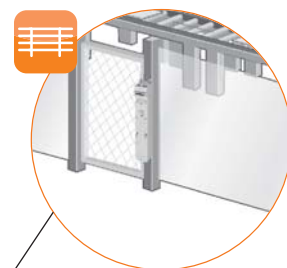
## Examples of application

This example of application shows the wireless emergency stop system SAFEMASTER W in combination with the safety switch and key transfer system SAFEMASTER STS. If the handheld transmitter is removed from the station and started, the wireless emergency stop and additional control functions activate (1). After activating the wireless emergency stop, access to the safety door is granted by SAFEMASTER STS (2) as soon as dangerous movements (3) have been switched off.



## Areas of application

- ▶ Extended mobile danger zones
- ▶ Fully automated fork lifts
- ▶ Gantry cranes
- ▶ Automated high-bay warehouses
- ▶ Robotic cells
- ▶ Automated assembly lines



SAFEMASTER STS

## Further information

SAFEMASTER W

Start

[www.dold.com](http://www.dold.com)

**DOLD**

**E. DOLD & SÖHNE KG**  
P.O. Box 1251 • 78114 Furtwangen • Germany  
Tel. +49 7723 6540 • Fax +49 7723 654356  
[dold-relays@dold.com](mailto:dold-relays@dold.com) • [www.dold.com](http://www.dold.com)